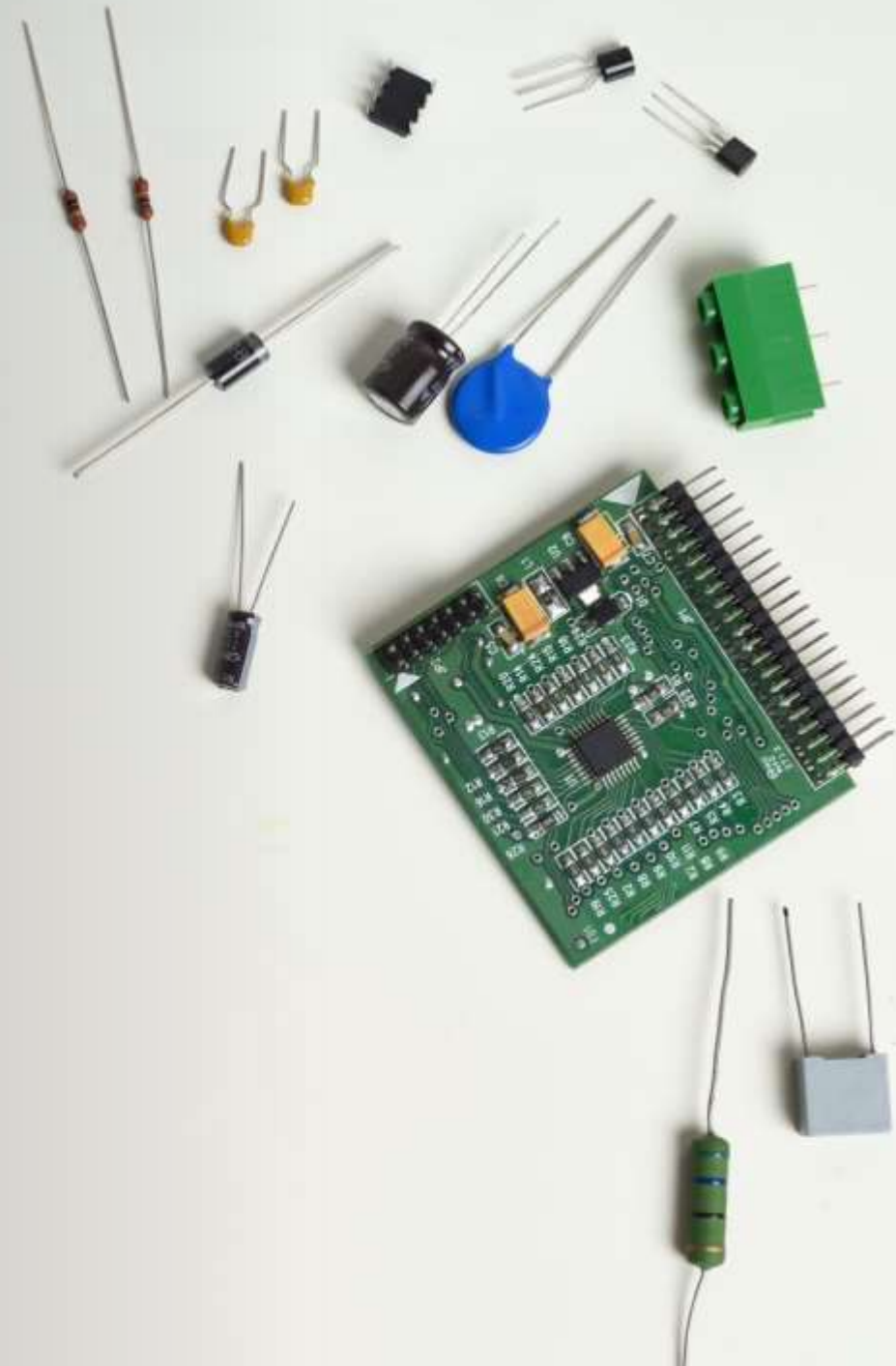


# Migrating from SharePoint On-Premises to Microsoft 365

Tips & Tricks from The Field

Daniel Glenn

DanielGlenn.com | @DanielGlenn





[DanielGlenn.com](http://DanielGlenn.com)



[@DanielGlenn](https://twitter.com/DanielGlenn)



[/DanielGlenn](https://www.youtube.com/DanielGlenn)



[/DanielGlenn](https://www.linkedin.com/DanielGlenn)



# Agenda



Why move



Where to move



How to move

Why move?

[DanielGlenn.com/M2M365](http://DanielGlenn.com/M2M365)



# On Premises



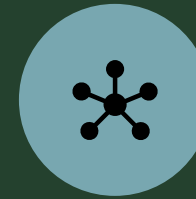
SERVER & SQL  
MGMT



CAPEX VS  
OPEX



FULL CONTROL



ON NETWORK



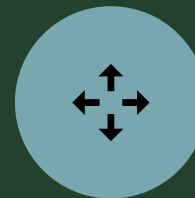
BACKUP / DR



DOWNTIME



PERMISSIONS  
NIGHTMARE



SITE REORG



NO MODERN  
FEATURES

# End of Support

- SharePoint 2010
  - No mainstream support
  - Extended support : April 13, 2021
- SharePoint 2013
  - No mainstream support
  - Extended support: 4/11/2023
- SharePoint 2016
  - Mainstream support: 7/13/2021





Where to move

# Microsoft 365 Helps You Do More



MICROSOFT  
SEARCH



WE ALL GET  
VERSIONS



EDITING BLISS



ACCESS  
ANYWHERE



METADATA!



RECYCLE BINS  
AND RESTORES



DATACENTER  
REDUNDANCY



USER-DRIVEN  
PERMISSIONS



# Which Service?





# Migrating to Microsoft Teams

- Teams channels
  - General
  - Private
- File access for non-team members
- Microsoft Lists App

# Which Service?

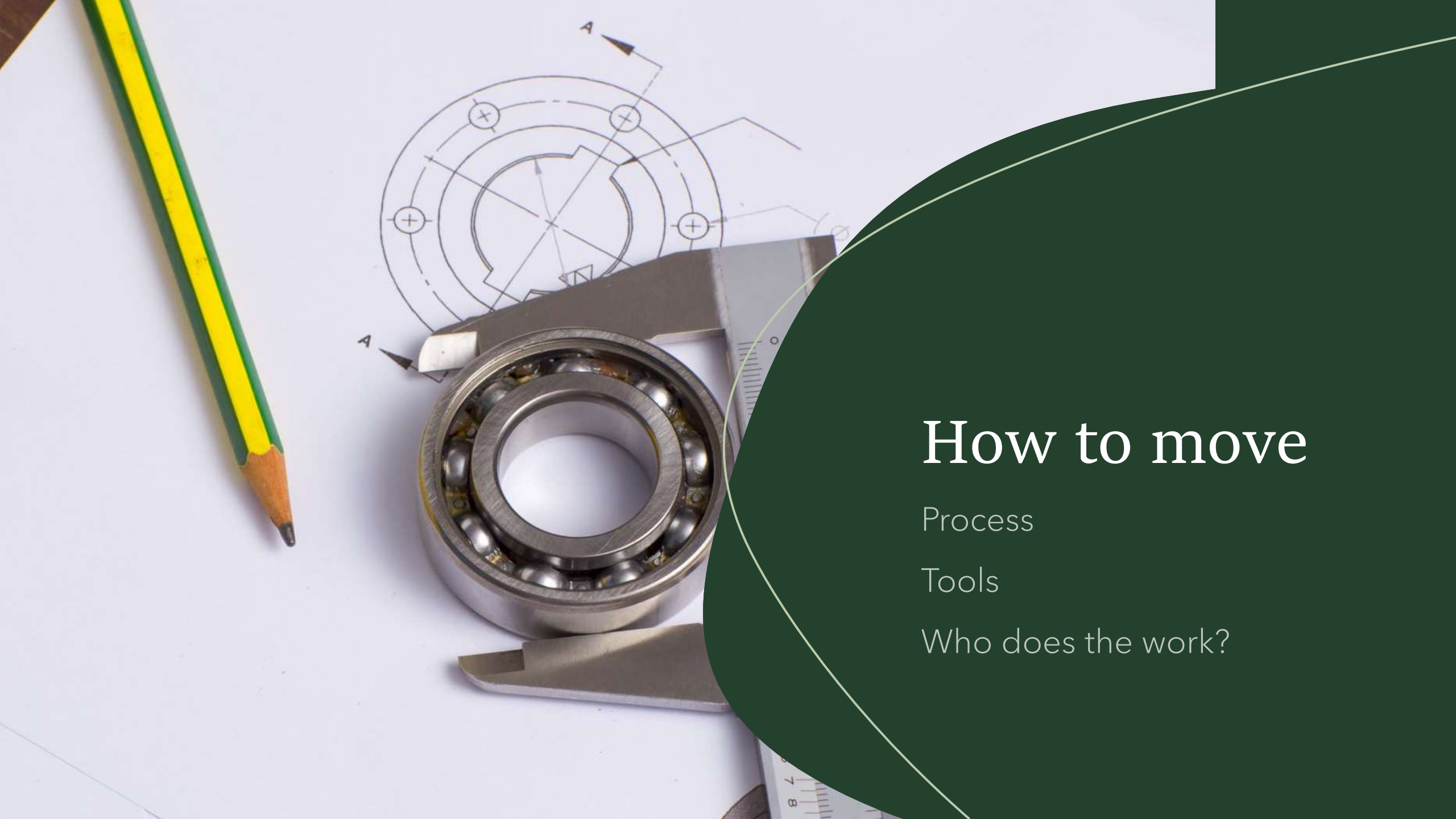
SharePoint Powers  
Files in Microsoft 365





## Organization Matters

- Business Units & Departments
- How your working groups & teams organized
- Project sites
- SharePoint Hubs, Home site, root site



# How to move

Process

Tools

Who does the work?

# Process

[DanielGlenn.com/M2M365](http://DanielGlenn.com/M2M365)



# Assessment



DATA CLEANUP



CUSTOM  
SOLUTIONS



WORKFLOWS



PERMISSIONS



METADATA



UNSUPPORTED  
FUNCTIONS

# Assessment

- There are undoubtedly a considerable amount of business processes that rely on your current site's structure, features, & permissions







## Big Bang vs. One at a time

- One big migration
  - LOTS of preparation needed
  - Test!
- Department by Department
  - Can be slow; transition time longer
  - Test!
- Slow, quick, user-led, admin directed, etc.
- Hold workshops to help find out

# Perform Trials

- Migrations can be repeated
- Test to make sure it looks and performs correctly
- Don't ever migrate without test
- Involve your users!



# Tools



# Mover.io



## Sources

- File shares
- Other online file services
- Microsoft 365
- NOT SharePoint On-prem

## Destinations

- OneDrive, OneDrive for Business
- SharePoint Online, Teams sites
- Azure Blob Storage

# SharePoint Migration Tool (SPMT)

- To: SharePoint, Microsoft Teams, & OneDrive
- From: SharePoint 2010, 2013, 2016; file shares and local drives
- SharePoint Migration Assessment Tool (SMAT)
  - Command-line tool to know if your SharePoint farm has issues that will cause migration problems

## Welcome to the SharePoint Migration Tool

Migrate file shares or SharePoint Server 2013 sites to SharePoint Online or OneDrive

Start your first migration

- GUI based migration tool
- Can migrate lists, libraries, file shares, and complete sites
- Includes a PowerShell module for automation
- Can pre-create migration job CSV to do multiple sites at once
- Recommended migration method by Microsoft
- Only supports SharePoint and file shares

- Brand New Full Migration / Incremental of previous migration
- Migrates SharePoint On-Premises or File Shares
- You can create CSV/JSON input file for multiple sites/libraries at a time

## < Where's your content

### SharePoint Server

My content is in SharePoint Server 2010, 2013, or 2016

### File Share

My content is on my local computer or on a network file share

### JSON or CSV file for bulk migration

I have created a JSON or CSV file that lists all my sources and destinations of the content I want to migrate

< Select a destination

Enter the SharePoint Online site where you want to migrate your content

Select a document library

 ▼

Next Cancel

- Migrate into existing site and library
- When migrating file shares, the site and library needs to exist beforehand
- For SharePoint migrations, the site does not need to exist



- You can add multiple “migrations” (tasks) in a single go

### Review migration

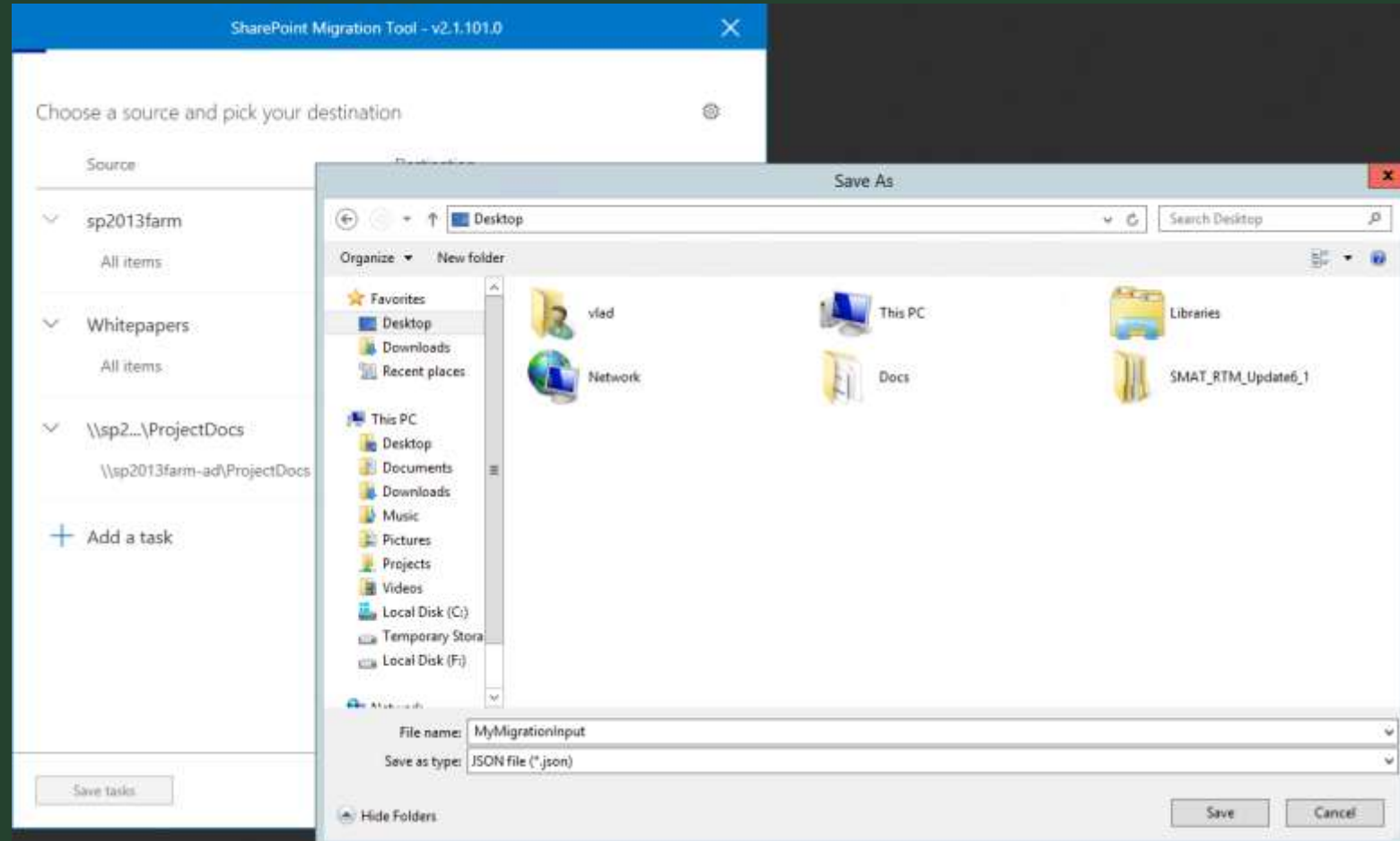
**Name your migration**

Source	Destination
▼ D:\...\Resources ...net\DataSource\Gibber\Resources	dgnet Team Site Documents

[+ Add another source](#)

**Next** Save for later Cancel

- You can save your configuration done in the UI into a JSON file
- Easy to re-use as input after



# PowerShell

- Import-Module

Microsoft.SharePoint.MigrationTool.PowerShell

<https://DanielGlenn.com/B43K>

- Export-SPWeb

Watch Vlad's course:

<https://DanielGlenn.com/PT47>

[DanielGlenn.com/M2M365](https://DanielGlenn.com/M2M365)

```
source#
url = "http://YourOnPremSite/"
Credential = New-Object -TypeName System.Management.Automation.PSCredential -ArgumentList $url, (ConvertTo-SecureString -String "Yourcomputer\administrator" -AsPlainText -Force)
Global:SPCredential = New-Object -TypeName System.Management.Automation.PSCredential -ArgumentList $url, (ConvertTo-SecureString -String "OnPremPassword" -AsPlainText -Force)
Global:SourceListName = "SourceListName"

Point target#
url = "https://contoso.sharepoint.com"
Global:SPCredential = New-Object -TypeName System.Management.Automation.PSCredential -ArgumentList $url, (ConvertTo-SecureString -String "YourSPOPassword" -AsPlainText -Force)
Global:TargetListName = "TargetListName"

e Share data source#
Global:FileShareSource = "YourFileShareDataSource"

Migration Module#
Import-Module Microsoft.SharePoint.MigrationTool.PowerShell

Start-SPMigration -SPOCredential $Global:SPOCredential -Force

the session. One is SharePoint migration task, and another is
Start-SPMigration -SPSourceCredential $Global:SPCredential -SharePointSourceSiteUrl $Global:SPSource -TargetSiteUrl $Global:SPOU
e. #
```





## Third-party Applications

- Can provide more flexibility in your migration
- Support older SharePoint versions
- Metadata mapping
- Better analysis of your sites
- Improved reporting

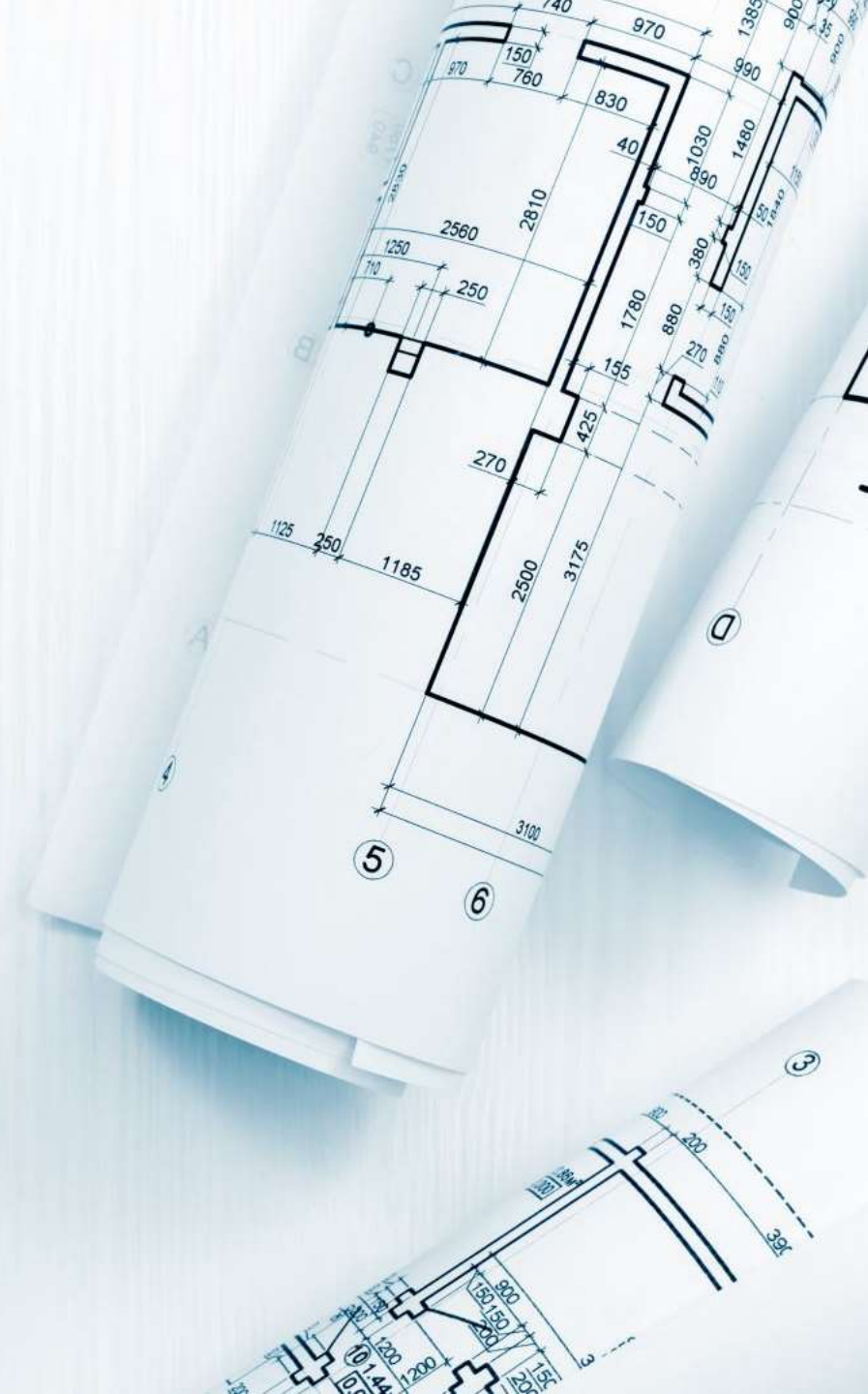
# Manual Move

- Users or Admins responsible for manually copying over data
- Should only be used in limited cases
- No versions, no permissions
- Drag & Drop, OneDrive sync client



# Who does the work

[DanielGlenn.com/M2M365](http://DanielGlenn.com/M2M365)





## Who does the work

- Lead
- Architect
- Content Owners  
(department leads, for example)
- Migrators
- Trainers
- Support
- Adoption

# Adoption

- You will need an adoption program
  - Microsoft 365 is very different than anything you have on-prem
  - Adoption is NOT training
- Recently launched Microsoft 365 Adoption site
  - [adoption.microsoft.com](https://adoption.microsoft.com)





# Training

- Admins need training
  - Everything is not new, but lots of differences
  - Microsoft 365 Groups
- Users need training
  - SharePoint modern features
  - OneDrive client
  - Microsoft Teams
  - What to use when? Windows explorer, SharePoint website, Teams, Office App directly

# Governance

- Defines who does what and when
- Needs to integrate with what your organization needs
- Get buy in from users
- Changes over time



# Know When You Need Help

A Partner can help you achieve more – they enable better & faster projects and come with experience from previous projects.

Look for:

- Competency in the product
- Previous migration project experience
- Partner employees that are invested in your success



[InfoWorks-TN.com](http://InfoWorks-TN.com)

# Keeping up with change in Microsoft 365



On-prem you could control when new features were added, and existing functionality changed



M365 changes come every week



You need a process for understanding changes and communicating them to your users



Live Show  
every Monday!



Subscribe via your favorite  
podcast app

<http://MessageCenter.Show>

# Key Takeaways



Know your content



Know where you are going



Use tools to make the move easier



Work with a partner – don't go it alone



[DanielGlenn.com](http://DanielGlenn.com)



[@DanielGlenn](https://twitter.com/DanielGlenn)



[/DanielGlenn](https://www.youtube.com/DanielGlenn)



[/DanielGlenn](https://www.linkedin.com/DanielGlenn)

