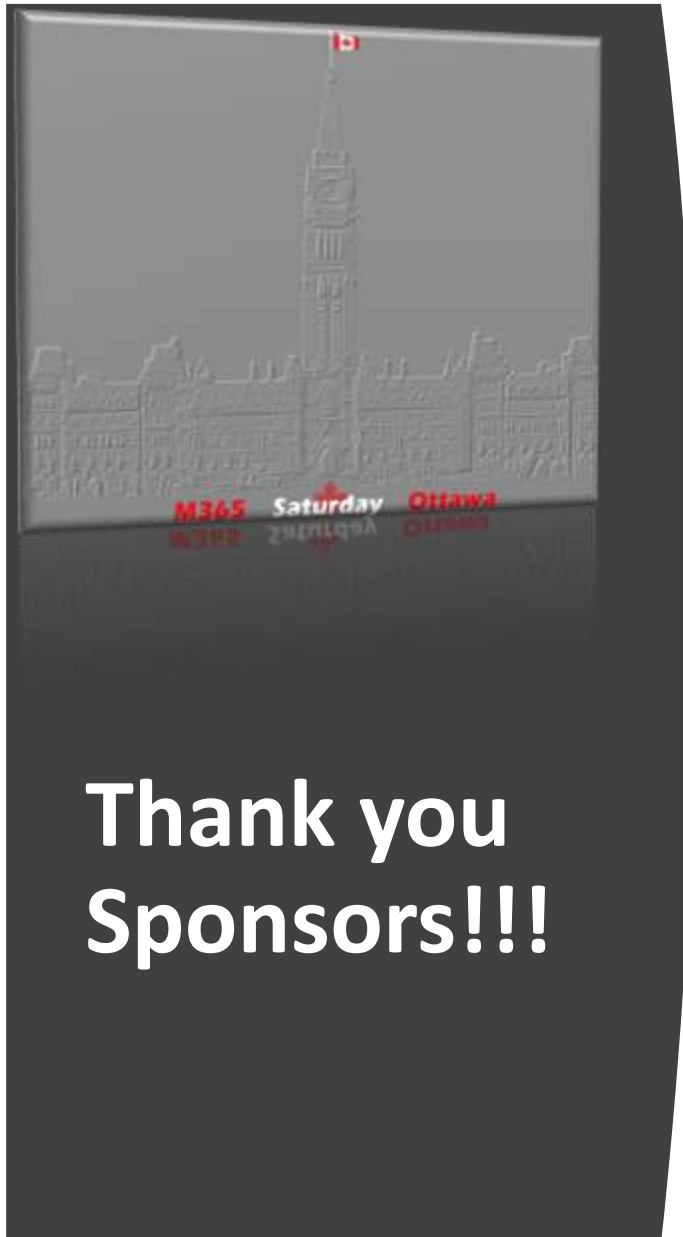


Gaining Insights With Power BI

Daniel Glenn
InfoWorks, Inc.

M365 Saturday Ottawa

<https://d-g.me/OTTAWA20>



#M365Ottawa

@SPSOttawa

THANK YOU

Feedback form

<https://bit.ly/3dcSfSw>



Agenda

Introduction to Power BI

What are Dashboards & Reports?

Administration

Viewing & Sharing

Working With Your Data

DAX



DanielGlenn.com



@DanielGlenn



/DanielGlenn



/DanielGlenn





Live Show
every Monday!

Subscribe via your favorite
podcast app

URL: MessageCenter.Show





960

Total Repairs

23

Average Repair Time (min)

10

Average Response Time (min)

14

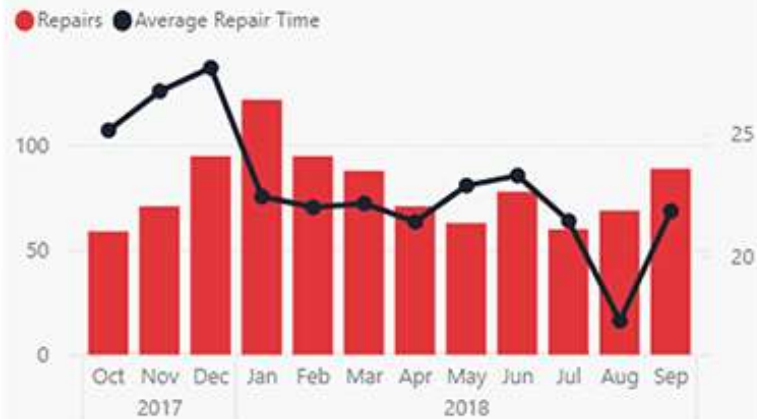
Out of Service days

69

MTBF



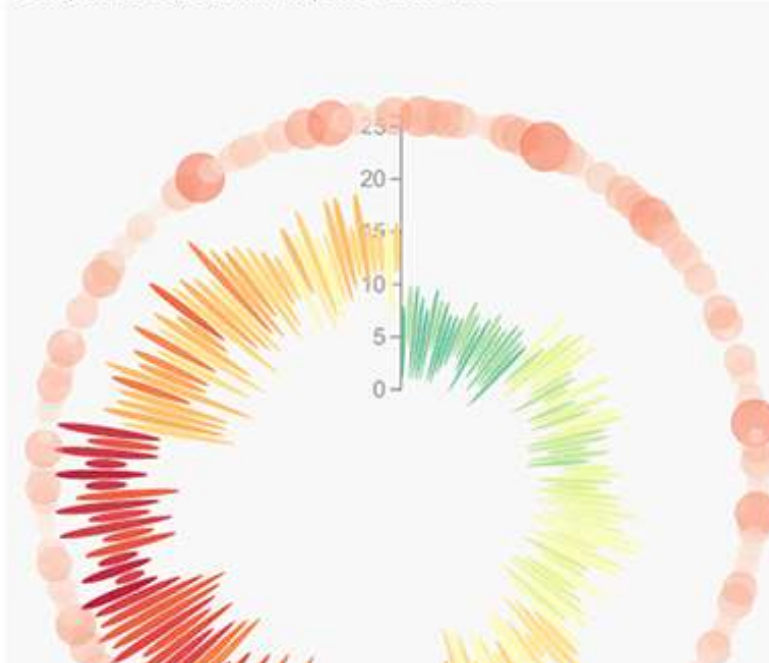
Repairs and Average Repair Time by Year and Month



Repairs by Action Taken



Temperature (C°) and Repairs Over Time



Count of Repairs by Location



What is Power BI?

Microsoft Power BI



Power BI enables everyone at every level of your organization make confident decisions using up-to-the-minute analytics.

<https://d-g.me/OTTAWA20>

Gain insights from your data regardless of where it lives with Power BI



Connect to all your data and get a consolidated view across your business through a single pane of glass

Create ad-hoc analysis, live dashboards and interactive reports that are easy to consume on the web and across mobile devices

Build smart apps by infusing insights from your data and drive action with the power of the Power Platform



Microsoft Power Platform

The low-code platform that spans Office 365, Azure, Dynamics 365, and standalone applications



Power BI
Business analytics



Power Apps
Application development



Power Automate
Process automation



Power Virtual Agents
Intelligent virtual agents



Data connectors



AI Builder



Common Data Service



Datasets

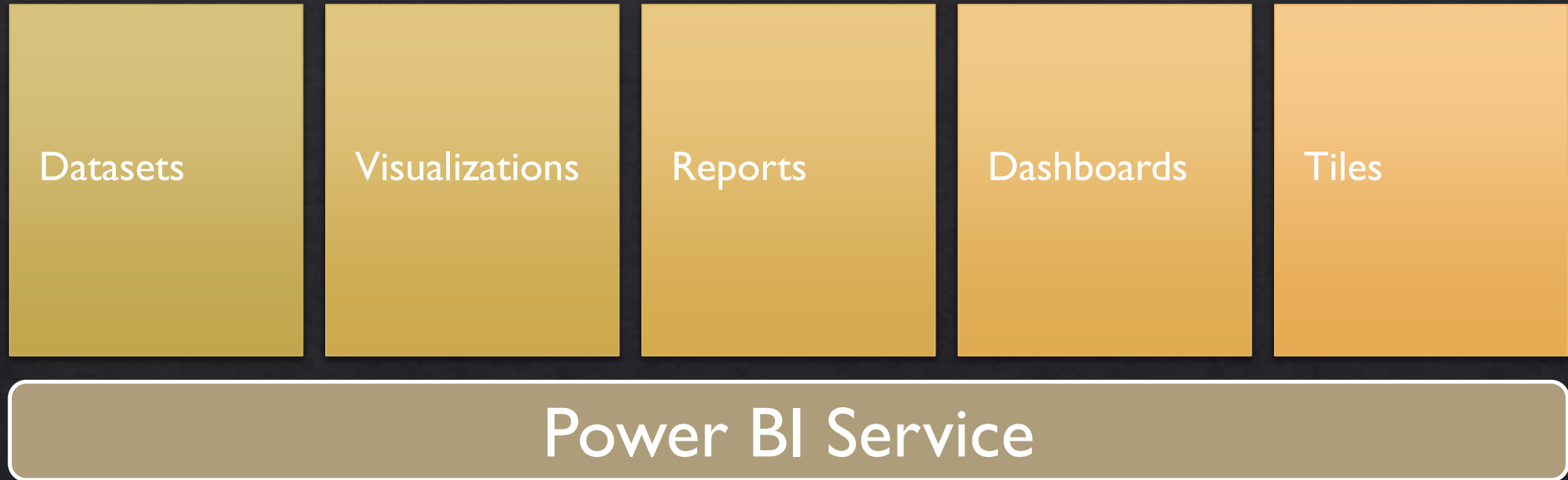
Visualizations

Reports

Dashboards

Tiles

Power BI building blocks



Power BI building blocks



A diagram showing the building blocks of Power BI. It consists of a large rounded rectangle containing three smaller rounded rectangles. The top rectangle is light beige and contains the text 'Power BI Service'. Below it are two rectangles: a black one on the left containing 'Power BI Desktop' and a light beige one on the right containing 'Power BI APPS'.

Power BI Service

Power BI Desktop

Power BI APPS

Power BI building blocks

Dashboards and Reports



Why use a dashboard?



Transform business data into insights



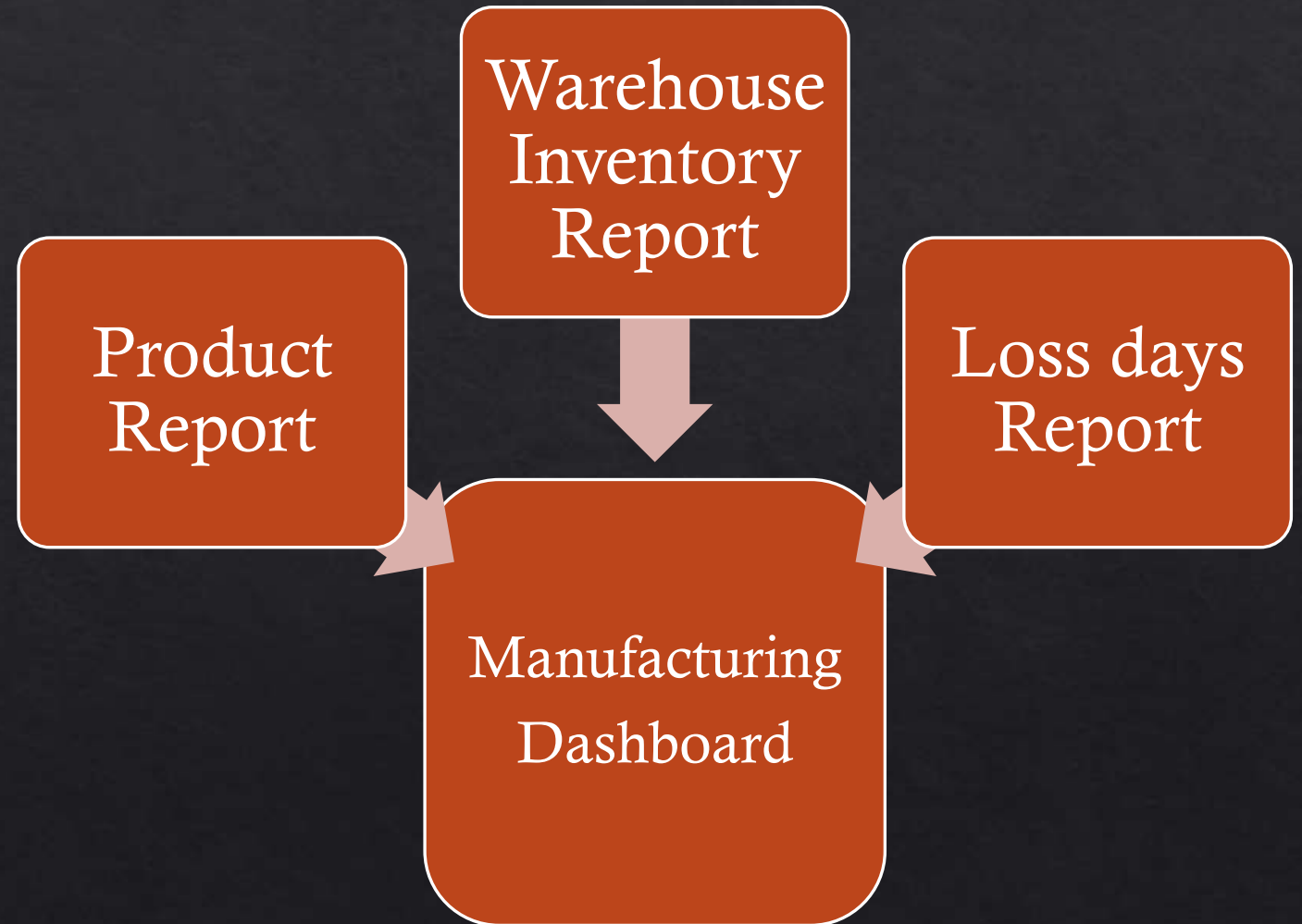
Keep the organization focused



Tell your data story and be an influence

Make it compelling

- Business-driven & updated often
- Use Key Performance Indicators
- Actionable



Make it compelling

- Business-driven & updated often
- Use Key Performance Indicators
- Actionable



Make it compelling

- Tell and show with labels, descriptions
- No thinking required for quick analysis
- Less is more
- Minimize distractions
 - Continuity
 - Symmetry
 - Proximity
 - Similarity



Make it compelling

- Tell and show with labels, descriptions
- No thinking required for quick analysis
- Less is more
- Minimize distractions
 - Continuity
 - Symmetry
 - Proximity
 - Similarity



Dashboards - Main Takeaways

Tell a story

- Limit the number of points you are trying to make
- 3-5 charts on a page
- Present with text (connect points with commentary)
- Where should I start looking, what's next, where to end

Call to action

- Make it clear what decision should be made



Administration

This Photo by Unknown Author is licensed under CC BY-SA

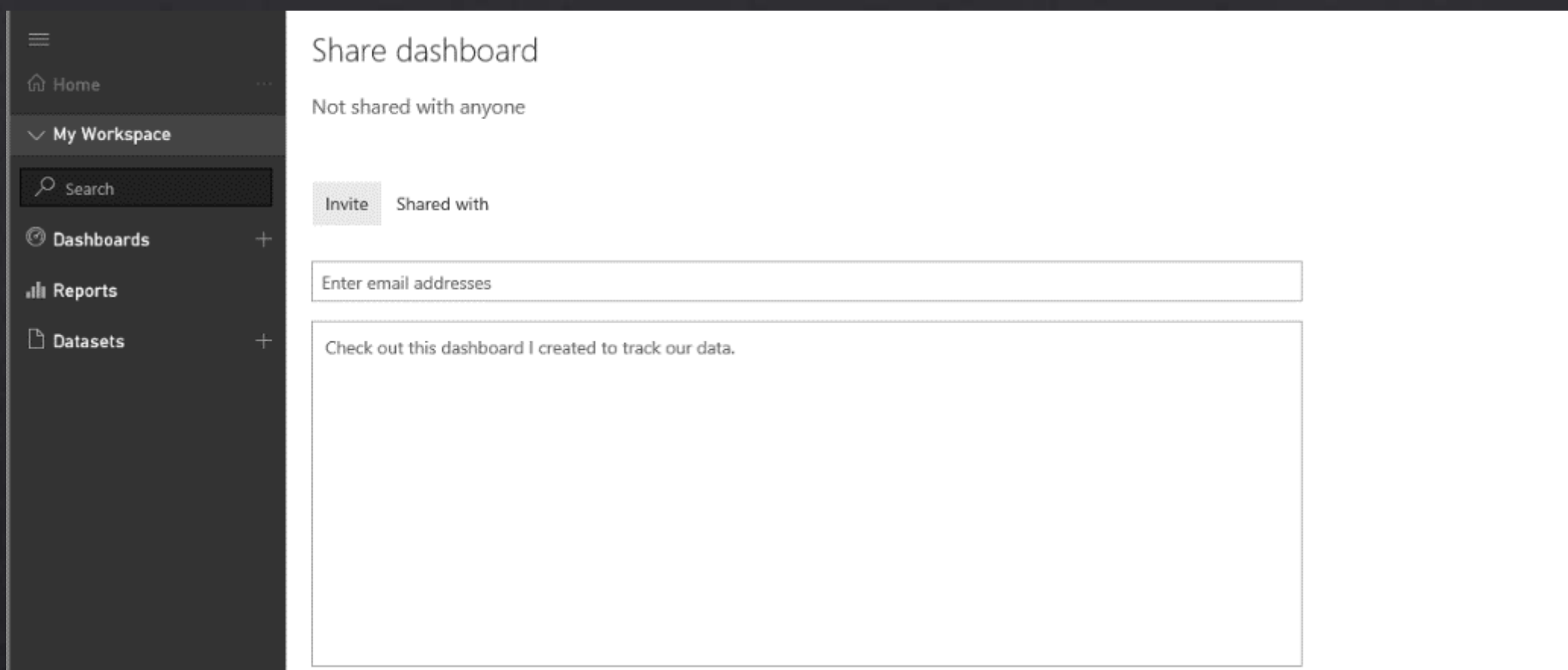
Administration



POWER BI ADMIN
PORTAL



DESKTOP ROLLOUT
AND UPDATES



Viewing and Sharing

Sharing



SHARE
DASHBOARDS
& REPORTS



CONTENT
PACKS



APPS



APP
WORKSPACES

Sharing on the Web

Embedding
reports

Anonymous
sharing

SharePoint
pages

Private
embedding

Sharing on the Web

Share report

ADVENTUREM

Share Access

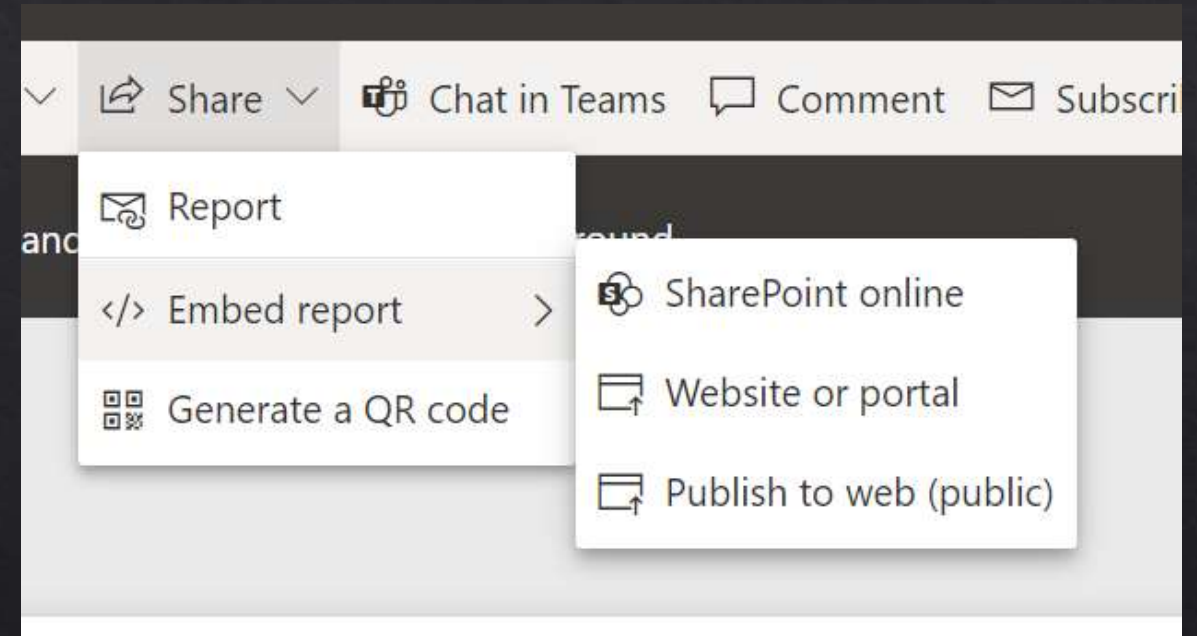
Only users with Power BI Pro will have access to this report. Recipients will have the same access as you unless row-level security on the dataset further restricts them. [Learn more](#)

Grant access to

Enter email addresses

Include an optional message...

- ☒ Allow recipients to share your report
- ☒ Allow users to build new content using the underlying datasets
- ☒ Send email notification to recipients



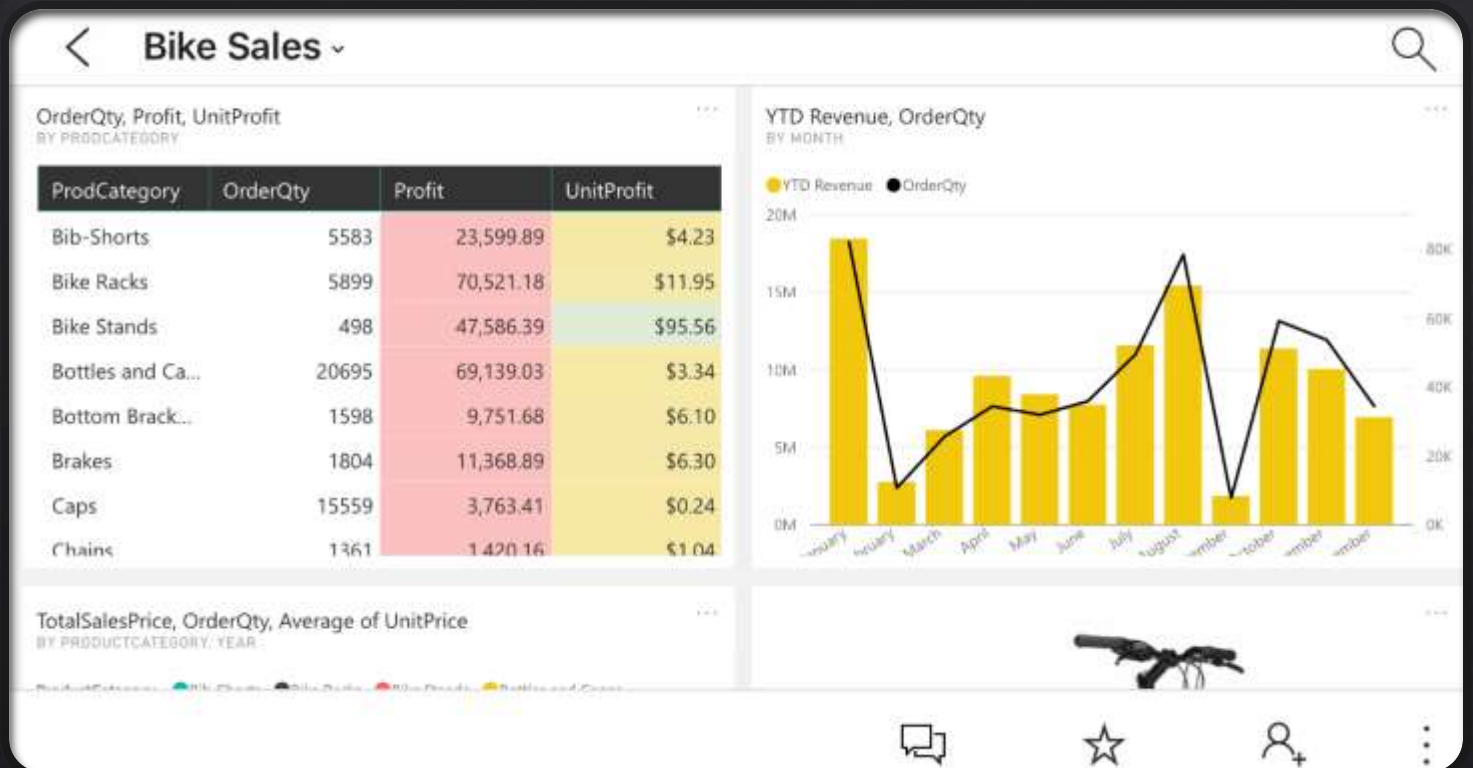
<https://d-g.me/OTTAWA20>

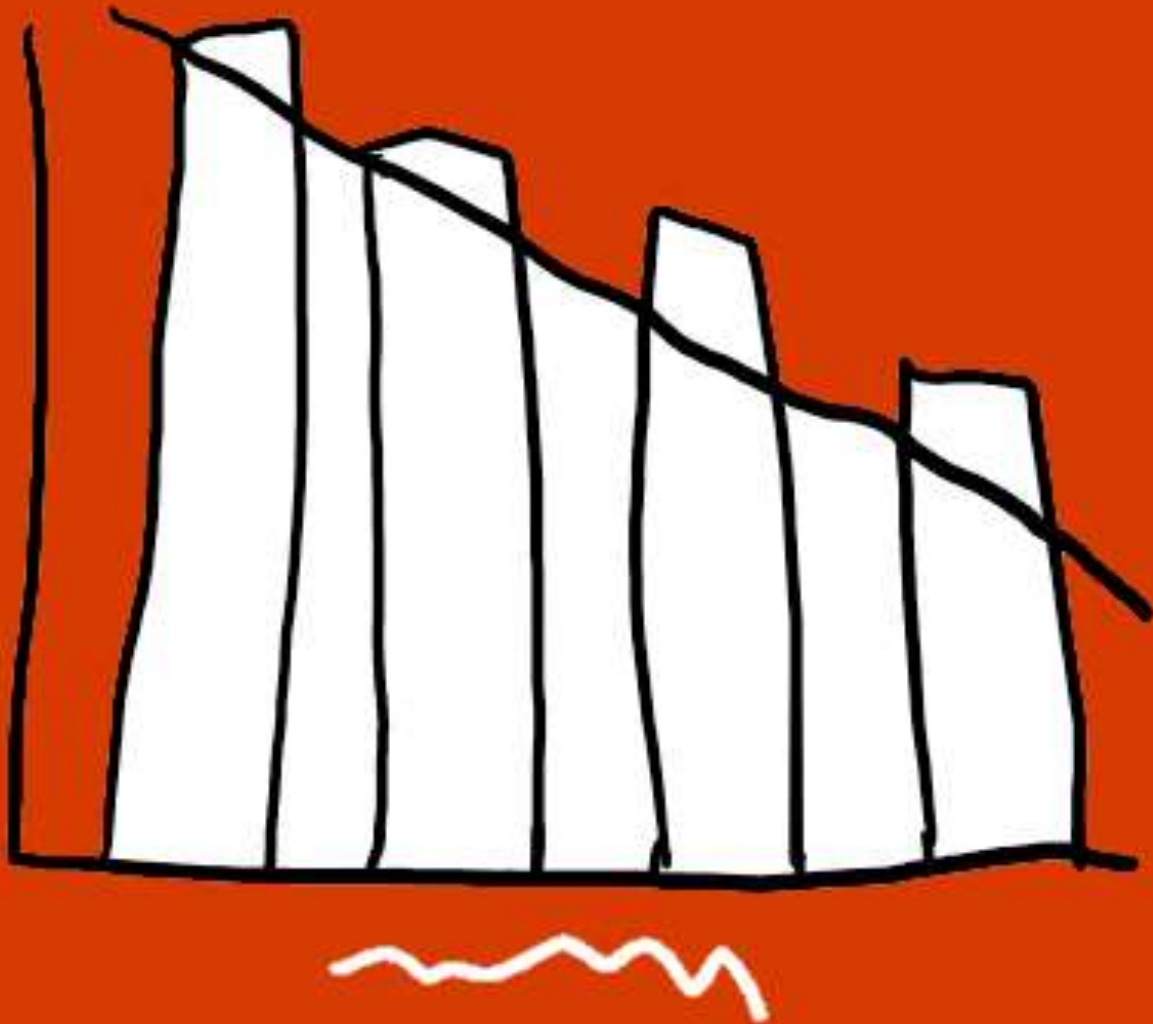
Mobile viewing

Power BI mobile apps

◆ iOS

◆ Android





Working with Data

Your Data



STUDY AND KNOW
YOUR DATA



DATA SOURCES
GALORE

*If using on-premises data, a data gateway is needed to be installed on your network before you can share your reports, etc.

<https://d-g.me/OTTAWA20>

Exploring data import options

Excel

SQL Server

Text

Web

Odata feeds

and more!

On-premises data gateway

One gateway for multiple cloud services and experiences

Cloud services



Gateway Cloud Service

- Encrypts and stores data source credentials and on-premises data gateway details
- Routes queries and results between cloud services, on-premises data gateway, and data source



Azure Service Bus



On-premises data gateway

- Decrypts data source credentials and connects to data source
- Sends queries to data source and returns the results to gateway cloud service

On-premises data sources



Identify

Identify gateway server



Install

Install data gateway



Connect

Connect with Azure

Gateway Configuration Steps



Intro to DAX

INTRO TO DAX



DAX stands for **Data Analysis Expressions**



It is a functional language



Two primary data types:
Numeric and 'Other'

Numeric: integers, decimals, currency
Other: strings and binary objects

INTRO TO DAX

Uses operator overloading



Mix data types in
your calculations



Results will change
based on the input
data type



Happens automatically –
could have negative
consequences
(KNOW YOUR DATA)

DAX Resources



DAX Basics: [DanielGlenn.com/DAXBasics](https://danielglenn.com/DAXBasics)



Video Course: [DanielGlenn.com/DAXvideos](https://danielglenn.com/DAXvideos)

Coming Soon



Quick create reports



Create reports in
Microsoft Teams



Organizational
datasets

Questions?

Power BI Resources

- Guy in a Cube - GuyInACube.com
- Podcast: BiFocal Show
- InfoWorks, Inc. – [contact me!](#)
- Help in the app
- Docs on Microsoft.com



[illegible]

THANK YOU

Feedback form

<https://bit.ly/3dcSfSw>





DanielGlenn.com



@DanielGlenn



/DanielGlenn



/DanielGlenn

